

**CHORUS OF FOOLS PROUDLY PRESENTS**

**WRITTEN BY  
DAVID NONEMAKER &  
ERIC SATTERFIELD**

**DIRECTED BY  
ERIC SATTERFIELD**



# **Elsinore**

**OCTOBER 9-19, 2025  
GREENFINCH THEATER & DIVE**



**[www.choursoffools.org](http://www.choursoffools.org)**

# Special Thanks

---

We want to express our heartfelt appreciation to the individuals and organizations who played an essential role in bringing this production to fruition. Your support has been invaluable, and we couldn't have done it without you. Thank you for being an integral part of this production.

Five Star Center

Mind's Eye

Prison Performing Arts

Shakespeare Festival STL

SIUE

Stray Dog Theater

Charles Adams

Shawn Cooley

Richard Delmas

Shawn Delmas

Carla Evans

Gary Harshaw

Dakota Lamb

Melinda Ligon

## Board of Directors & Staff

---

Melinda Ligon, *President*

Dee Gordon, *Vice President*

Shawn Davies

Vickie Delmas

Rita Winter

Eric Satterfield, *Executive Director*

Hazel McIntire, *Director of Engagement*

David Nonemaker, *Director of Finance*

## Artistic Ensemble

---

Kaylie Carpenter

Irene Cornett

Andre Eslamian

Celeste Gardner

Joseph Garner

Moira Healy

Xander Huber

LaWanda Jackson

Jocelyn Padilla

Zach Pierson

Nikki Pilato



Missouri Arts Council

**FINANCIAL ASSISTANCE FOR THIS PROJECT  
HAS BEEN PROVIDED BY THE MISSOURI ARTS  
COUNCIL, A STATE AGENCY**

# Elsinore

written by David Nonemaker & Eric Satterfield

## Cast of Characters

CLAUDIUS .....	Joseph Garner
HAMLET .....	Andre Eslamian
GERTUDE .....	Jocelyn Padilla
KING .....	John Wolbers
POLONIUS .....	Chuck Brinkley
OPHELIA .....	Hannah Geisz
COLLETTE .....	Lexie Johnson
ROSENCRANTZ .....	Xander Huber
GULDENSTERN .....	Zach Pierson
LORD WALDEMAR .....	Xander Huber
LORD OLAF .....	Joe Kercher
OSRIC .....	Rose Reiker
YOUNG CLAUDIUS .....	Zach Pierson
LAERTES .....	Joe Kercher
HOODED FIGURE .....	Joe Kercher

## Production Team

Director .....	Eric Satterfield
Assistant Director/Dramaturg .....	Nikki Pilato
Stage Manager .....	Moira Healy
Accessibility Consultant .....	Jen Kerner
Costume Designer .....	Celeste Gardner
Fight Choreographer .....	Ryan Lawson-Maeske
Intimacy Director .....	Tress Kurzym
Lighting Designer .....	Bradley Rohlf
Prop Designer .....	Vickie Delmas
Set Designers .....	Vickie Delmas, Eric Satterfield
Sound Designer .....	Eric Satterfield

# Meet The Artists

---



**Church Brinkley**



**Vickie Delmas**



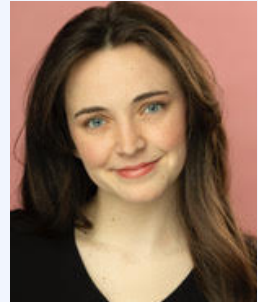
**Andre Eslamian**



**Celeste Gardner**



**Joseph Garner**



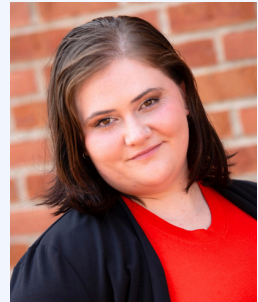
**Hannah Geisz**



**Moira Healy**



**Xander Huber**



**Lexie Johnson**



**Joe Kercher**



**Jen Kerner**



**Tress Kurzym**

# Meet The Artists

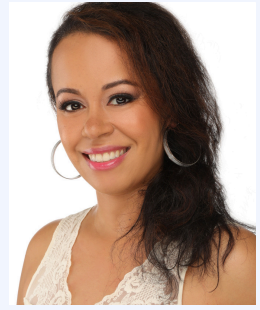
---



**Ryan Lawson-Maeske**



**David Nonemaker**



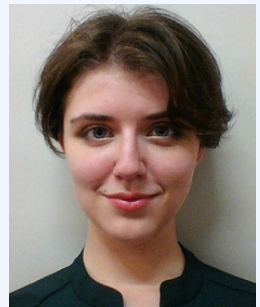
**Jocelyn Padilla**



**Zach Pierson**



**Nikki Pilato**



**Rose Reiker**



**Bradley Rohlf**



**Eric Satterfield**



**John Wolbers**



# Meet The Artists

---

**Chuck Brinkley (Polonius)** Chuck is really excited to work with Chorus of Fools for the first time. It marks his third time as Polonius, but the first time no one knows what he is going to say. As always, he wants to thank Meg for her patience. Love you, Sweetie.

**Vickie Delmas (Props and Set Designer)** is excited to be invited back as prop and set designer for *Elsinore*. Vickie previously designed for *The Bigfoot Diaries*, *The Pavement Kingdom*, *Candlelight Dinner*, and *The Reason Why*. She loves crafting, gardening, and baking. In addition to her design work, she volunteers in the community and serves on the board of directors of Chorus of Fools.

**Andre Eslamian (Hamlet)** is a St. Louis-based theatre artist who attended St. Louis University, majoring in Theatre and English. He has worked as an actor, designer, and/or collaborator for many companies around the city, including Upstream Theatre, St. Louis Shakespeare Festival, Slightly Askew Theatre Ensemble (SATE), Prison Performing Arts (PPA), and Prism Theatre Company. He is a member of the artistic ensemble of Chorus of Fools, and this is his second show with the company. His most recent acting roles include Mason in *Longing* by Lize Lewy at the Gaslight Theater, 137 in *Pictures from a Revolution* with Upstream Theatre, and Chad in *Heavy* with Chorus of Fools. He also works as a Standardized Patient at the Simulation Center for Washington University's School of Medicine.

**Celeste Gardner, she/they, (Costume Designer)** is a St. Louis-based director and theatre artist with a B.A. in Theatre and History from Saint Louis University. Directing credits include *Antigone*, *Pleiades in Taurus*, and *The Nightman Cometh*. Celeste has also worked with Metro Theater Company, Fly North Theatrical, and Prison Performing Arts in stage management, wardrobe, and technical production.

**Joseph Garner (Claudius)** is an actor/puppeteer who is excited to be making his on-stage debut with Chorus of Fools. BA in Theatre Performance from SIUE. Additional selected St. Louis credits include Albion Theatre (St. Louis Theatre Circle Nomination for Best Supporting Actor in a Comedy for *Woman in Mind*), West End Players Guild Theatre (St. Louis Theatre Circle Nomination for Best Supporting Actor in a Drama for *The Christians*), Cherokee Street Theatre, Stray Dog Theatre, Midnight Company, Contraband Theatre, and the Rep; selected New York credits include the Atlantic Theatre Company, La Mama, FringeNYC, Drama of Works, the Czechoslovakian-American Marionette Company, and the Swedish Cottage Marionette Theatre. Thanks to everyone involved with this production, and further thanks to Jordon, Cressida, Desi, and Imogen for "Dane-ing" to allow him to spend his evenings in Elsinore.

# Meet The Artists

---

**Hannah Geisz (Ophelia)** is so thankful for the chance to explore the world of *Hamlet* with the *Elsinore* team! Past Credits Include: *Daddy Long Legs* (Bluff City Theater), *Cymbeline*, *Othello*, and *SITS Bevo Mill* (St. Louis Shakespeare Festival), *Spells of the Sea* and *Go Dog Go!* (Metro Theatre Company), *Tonya...* *Subterrastrata* (SATE Aphra Behn Festival), and *Roll with It!* (Black Mirror Theatre). Hannah received a St Louis Theater Circle Award for Best Supporting Actor in a Comedy in 2023 for *The Lonesome West* (West End Theatre). Love to Peter Baartman and her incredible family and friends. 1 Cor 1:31

**Moira Healy (Stage Manager)** is thrilled to be part of the *Elsinore* team as a first-time Stage Manager! Moira holds a BFA in Musical Theatre from Lindenwood University. She is also a graduate from the Improv Shop St. Louis' Training Program, where she frequently performs with her team, Cassette Roulette, and musical improv team, Loosifer Goosifer. She is a proud member of Chorus of Fools Artistic Ensemble. Recent credits include: *Saving Grace* (STL Fringe Fest), *Heavy* (Chorus of Fools), *The Bigfoot Diaries* (Chorus of Fools), and *Bright Star* (Hawthorne Players). She'd like to thank Eric for taking a chance on a newbie SM, and the rest of the cast and creative team for all their hard work to put on an amazing production. "Special thanks to Mom, Dad, MawMaw, and Andrew for all your love and support! Wouldn't be here without you!"  
Instagram: [@moira.on.broadway](https://www.instagram.com/moira.on.broadway)

**Xander Huber** is incredibly excited to be back on stage with Chorus of Fools. Some of his notable roles include Marty in *The Bigfoot Diaries* and Pete in *The Reason Why* with Chorus of Fools, Osric and Marcellus in St. Louis Shakespeare's *Hamlet*, Prompter in *Barrymore* with St. Louis Actors Studio, and Madeline Astarte in *Vampire Lesbians of Sodom* with Stray Dog Theater.

**Lexie Johnson (Collette)** moved to St. Louis from Nebraska last summer after graduating from Wayne State College with her B.A. in Vocal Performance. Lexie has been involved with theatre since she was a little girl, and since moving to St. Louis, Lexie has taken part in over 5 productions. Some of her favorite roles have included Lucy in *You're a Good Man, Charlie Brown*, Catherine in *Pippin*, and Denise Sanders in *Smoke On The Mountain*. Lexie is excited to make her Chorus of Fools debut and would like to thank her friend Irene Cornett for introducing her to this wonderful company. Lexie would also like to thank her husband, coworkers, and mother for their continued support of her theatrical endeavors.

# Meet The Artists

---

**Joe Kercher (Lord Olaf, Laertes, Hooded Messenger)** is rhapsodical to be in Chorus of Fools' *Elsinore*. This is Joe's first time working with this wonderful theatre company. He got his Bachelor's in Theatre at Saint Louis University, which helped foster in him a lifelong love of storytelling and the performing arts. He loves history, playing on his ukulele when he can, and trivia nights with his friends. He thanks his family, friends, and, of course, his fans for their love and support. He dedicates his performances to his loving wife, Tia, who supports him every step of the way!

**Jen Kerner (Accessibility Consultant)** is delighted to return to Chorus of Fools for another round of accessibility consulting, having been in the same role for *Heavy* earlier this year. Jen's background includes 13 years of experience as a performer in the St. Louis theatre community, 16 years of experience as a disability services professional, and [um, let's just say she's middle-aged, shall we?] years of experience as an autistic person. "Everyone has the right freely to participate in the cultural life of the community, to enjoy the arts and to share in scientific advancement and its benefits" (United Nations Universal Declaration of Human Rights). #ArtsForAll

**Tress Kurzym, she/her (Intimacy Director)** is a multi-hyphenate theatre creator and educator whose work has been seen at regional and international theatres, including the Alley Theatre, Milwaukee Repertory Theatre, Bobbindoctrin Puppet Theatre, The Institute of Contemporary Arts, and the Edinburgh Fringe Festival. Tress also works as an Intimacy Director in the St. Louis area; most recently with Tesseract Theatre (*POTUS*), the MUNY (*Waitress*), and St. Louis Shakespeare Festival (*Twelfth Night*). Tress heads the Theatre Education and Teacher Training for the Department of Theatre and Dance at Southern Illinois University Edwardsville, where she has the opportunity to mentor future theatre educators.

**Ryan Lawson-Maeske (Fight Choreographer)** is a St. Louis-based theatre artist who is honored to be working with Chorus of Fools. As an actor and fight choreographer, he has had the privilege to work with such companies as Prison Performing Arts, Metro Theater Company, The Black Rep, The New Jewish Theatre, SATE, Cherokee Street Theater Company, and Shakespeare Festival St. Louis, amongst others. He would like to humbly thank the cast and crew for their inspiring work.



# Meet The Artists

---

**David Nonemaker (Playwright)** is a St. Louis-based actor and writer. He is a co-founder of Chorus of Fools Theatre Company. He is the co-writer of *Elsinore* and *The Privilege of Being Second*. He recently performed in *Go Before I Do* and *The Golden Record* (Prison Performing Arts). He holds a BA degree in English from the University of Missouri – Columbia.

**Jocelyn Padilla (Queen Gertrude)** Originally from Boston, Massachusetts, Jocelyn Padilla now calls St. Louis home, where she has been thriving in the city's vibrant theatre scene. She is honored to portray Queen Gertrude in *Elsinore*, embracing the challenge of giving depth and humanity to one of Shakespeare's most layered women. In addition to acting, Jocelyn is an intimacy coordinator, dedicated to creating safe, collaborative, and powerful storytelling spaces. She has worked with Chorus of Fools as an IC on productions such as *Heavy* and *The Bigfoot Diaries*, and is continuing to make her mark as an intimacy professional in Missouri and beyond. Jocelyn is profoundly grateful for the opportunities Chorus of Fools has given her and the trust they've placed in her artistry. No matter where her journey leads — regional theatre, Broadway, Hollywood, or beyond — she will always carry the foundation and support of this ensemble with her.

**Nikki Pilato (Assistant Director, Dramaturg)** is overjoyed to be collaborating with Chorus of Fools once again. After graduating from the University of Southern Mississippi with a degree in theatre performance, she has worked all over the nation, including at the Shakespeare Theatre of New Jersey and the A.D. Players in Houston, Texas. A Shakespeare and Greek theatre nerd, locally, she has worked at theatres like Mustard Seed, Stray Dog Theater, R. S. Theatrics, and many more. Nikki is a member of Chorus of Fools Artistic Ensemble. Her recent credits include playing Ruby Lee in *The Bigfoot Diaries* and directing *Heavy*, both with Chorus of Fools. She wants to thank Mom, her sisters, and Mike for all the support. Thank you is so small. Alabanza!

**Zach Pierson (Guildenstern, Young Claudius)** is thrilled to be back with Chorus of Fools for *Elsinore*! A proud St. Louis native, Zach has been acting for eight years. He previously played Daniel Claypool in *The Bigfoot Diaries* and has also appeared as Monty in *Violet* and Cain in *Children of Eden* (Overdue Theatre Company). Zach sends a huge thank-you to his fiancée Hannah, his son Emmett (his biggest fan), and the Chorus of Fools family for their endless encouragement and laughs.

# Meet The Artists

---

**Rose Reiker (Osric)** is excited to be playing Osric in Chorus of Fools' production of *Elsinore!* Recently, Rose graduated from Saint Louis University in 2024 with a degree in History and Theatre, and they were involved in SLU's theatre department. A few of their past shows include *The Government Inspector* as Osip and *Dreaming of Lear* as Edgar. They are thrilled to be a part of their first professional production! Finally, Rose is grateful for the support they have received and the hard work of the director, designers, cast, and crew!

**Bradley Rohlf (Lighting Designer)** is a multi-hyphenate theater artist and musician. He was the drummer for local band Finlay Fields, and appears on their releases "What Songs Cannot Repay" (2010), and "From A to B" (2011). As a songwriter and recording artist, he has released two EPs under the moniker Another White Suburbanite, "AWS" (2011), and "Counter Culture" (2012). He began performing in shows across the STL metro region in 2013, and garnered a Best Performance Award nomination from Arts For Life for his portrayal of Mr. Bungee in *A New Brain* with Hawthorne Players in 2019. Most recently he was seen onstage as a part of SATE's 9th Annual Aphra Behn Festival. He is a co-founder of Fly North Theatricals, working in multiple production capacities on their shows. Directing credits include FNT's production of *Big Machine* (2024 St. Lou Fringe Headline Act), and *Assassins* (2022) for which he was awarded *Outstanding Director of A Musical* by the St. Louis Theater Circle, and the Midnight Company's recent production of *St. Nicholas*. Recent lighting design credits include *Heavy* for Chorus of Fools, *Madam* for Fly North Theatricals, and *Bat Boy* for New Line Theatre. He is the Managing Director of Fly North Theatricals, a co-host of Overarching, and co-owner of Greenfinch Theater & Dive.

**Eric Satterfield** (Director, Playwright) is a St. Louis-based actor, director, and Theatre Circle Award-nominated playwright. His plays include *Elsinore*, *The Privilege of Being Second* (co-written with David Nonemaker), *Heavy* (co-written with Hazel McIntire), and *The Bigfoot Diaries*. Recent directing credits include *Candlelight Dinner*, *The Reason Why* (Chorus of Fools), *Go Before I Do*, and *The Privilege of Being Second* (Prison Performing Arts). Acting credits include *Dreaming of Lear* (SLU), *The Privilege of Being Second*, *The Golden Record* (PPA), *Heavy*, and *Candlelight Dinner* (Chorus of Fools), and SATE's 2022 *Aphra Behn Festival*. He recently served as artistic consultant on *Clyde's* at The Repertory Theatre of St. Louis. Eric is the Producer and a Founder of Chorus of Fools Theatre Company, as well as the Production Coordinator for Prison Performing Arts. Eric

# Meet The Artists

is deeply grateful to Katie, his family, and friends for their unwavering support; to the Chorus of Fools board and artistic ensemble for their vision and trust; and to the cast of *Elsinore* for bringing such heart and courage to the stage.

**John Wolbers** (King Hamlet) returns to Chorus of Fools after first appearing in the staged reading of *Ghost Burger*, written by his stage son Andre Eslamian. However, he is no stranger to *Elsinore*, having been part of its world premiere in 2021. The Executive Director of Prison Performing Arts, Wolbers, is also a professional actor, playwright, educator, and producer whose work has been seen on stages and in classrooms across the St. Louis region. Recent credits include *Tempest in a Teapot* (SATE), *The Romanov Family Yard Sale* (ERA), *The Goonies* (Cherokee Street Theater Company), and *The Lion in Winter* (The Midnight Company). Much gratitude to this amazing ensemble onstage and off, and love to his queens: Liza and Bea!



MindsEye is a locally-based nonprofit committed to innovating accessible services to meet the evolving needs of the Metro St. Louis community.

Audio Description for Chorus of Fools helps to increase accessibility for audience members who are blind or partially sighted.

[mindseyeradio.org](http://mindseyeradio.org)  
[AD@mindseyeradio.org](mailto:AD@mindseyeradio.org)  
618-394-6444



# IMPORTANT REMINDERS



**Please turn off all electronic devices during the show.**



**Video recording and photography are prohibited during the show.**



**Learn more at: [chorusoffools.org](http://chorusoffools.org)**